



SHED COMMITTEE

SHED UPDATE

President:

Sandy Antonuccio

Vice-President:

Michael Martin

Treasurer:

Rob Wise

Secretary:

Keith Chamberlain

General Committee:

Peter Burge

Bob Kingston

Dean Tilley

Ron Palmer

1. Work is almost complete at the new site. Estimated completion date is Feb 2024.

2. Check out the photo's in this edition

3. Successful Farmers Market Dec 2023

4. Well attended AGM, 2 new committee members

Tool Humor

What tool best deals with traumatic events?

A: A coping saw



Presidents Report

Recent activities

Garage sale

We successfully sold a lot of second-hand tools that had been donated to the shed. It's important that we continue to declutter our shed as we have limited space and do not want to bring old stuff to the new shed.

Bonbeach Farmers Market

2 successful events August and December as we sold a lot of items that we have been accumulating. It's also a great marketing opportunity as the public get to see us and what we do. We picked some small jobs and a couple of enquiries for membership.

Membership

Our current membership is 35 members with 8 having joined in the last 6 months.

We are running out of room to accommodate new members but don't want to turn people away. We are looking forward to moving into our new home..

Sponsorship

Hodges real-estate have become a significant sponsor of the Chelsea Men's shed and have erected signage promoting the shed on Station Street and at our new location. We believe this has assisted in our membership growth.

Projects

Plenty of activities on the go at the moment, opportunity to make microbat boxes and possum boxes on a make to order basis via wildlife Victoria.

Lots of small repair jobs for members of the local community continue to filter in.

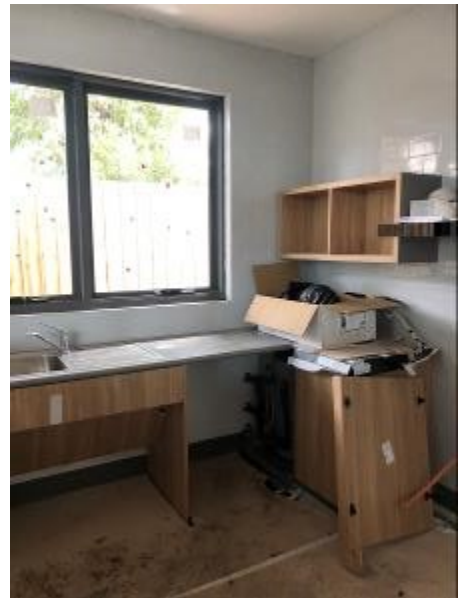
Catherine Ave update

Work commenced in early August and rapid progress has been made with the renovations nearing completion. See the following pages from some photos.

Estimated completion is Feb 2023

Revised fees for the new year

Joining fees reduced to \$10, No shirt will be provided, if you want a shirt it can be purchased for \$45 (does not apply to existing members)



THE SHED GAZETTE

Products available from the shed



THE SHED GAZETTE

Sponsors and Partners



Chelsea Men's Shed Inc is fortunate to be sponsored, supported, & partnered by several organisations and people

Sponsors

Chelsea Rotary, Lowe Building & Construction, RSL, Hodges Real Estate
Commonwealth Bank, Chelsea, Bendigo Bank, Aspendale Gardens , Global
Office & Warehouse Solutions,

Supporters

City of Kingston
State Government of Victoria
Commonwealth Government of Australia
Tim Richardson, MLA Mordialloc
Mark Dreyfus, MHR Isaacs.,

Partners

Otway Footwear, <https://otwayfootwear.com.au/>
Chelsea Meats, <https://www.chelseameats.com.au/>
In2Ply, <https://in2ply.com.au/>

It is through these sponsorships, partnerships and support that Chelsea Men's Shed can successfully deliver its groups, activities, programs and services.

THE SHED GAZETTE



About our Shed

Where are we:



Men's Shed Office Rear Blantyre Ave Chelsea

Email: admin@chelseamensshed.org.au

Website: www.chelseamensshed.org.au

Phone: 0493 497 254

Chelsea Men's Shed provides men of all ages and situations with a place to go and spend time talking with other men, do some woodworking, or participate in community projects, as well as participating in men's health and well being programs.

Fees:

\$10 joining fee

\$35 Annual Membership fee and \$7 per week when at the Shed

Chelsea Men's Shed is open:

9.00am to 1.30pm Wednesdays and Thursdays.

9.00am to 12.30pm Saturdays

New shed Location

71 Catherine Ave Chelsea